

Imprint Hoof Crack / Defect Repair Technique

Hoof Crack Repairs

- Trim and balance hoof to correct proportions to dissipate stress and facilitate even loading.
- Using a 4mm (3/16") burr in a high speed router tool debride crack of all necrotic tissue.
- Divide any meshing edges, make a clear step at the edge of the sound horn.
- Create necked notches at intervals in both edges of the sectioned hoof, (This will form interdigitation for the thermoplastic with the horn and deflect any possible shear line.) (photo a.)
- If the crack extends to the coronary border or involves vascular structures these areas need to be left open to the air and not filled (suitable medication applied) until dry and granulated. Any areas to be filled dry but still slightly sensitive on palpation can be covered with medicated wax putty before adhesive is applied.
- It is wise to leave 10mm (3/8") below the coronary border before filling, to prevent any irritation to the coronary border.
- Clean with surgical spirit to kill bacteria
- Apply a thin layer of Imprint Structural Adhesive to all surfaces to be repaired.
- Fill crack with softened Imprint Hoof Repair granules (preheated in hot water). Mould in from the centre kneading into all notches forcing the excess Imprint Structural Adhesive out at the edges. (photo b.)

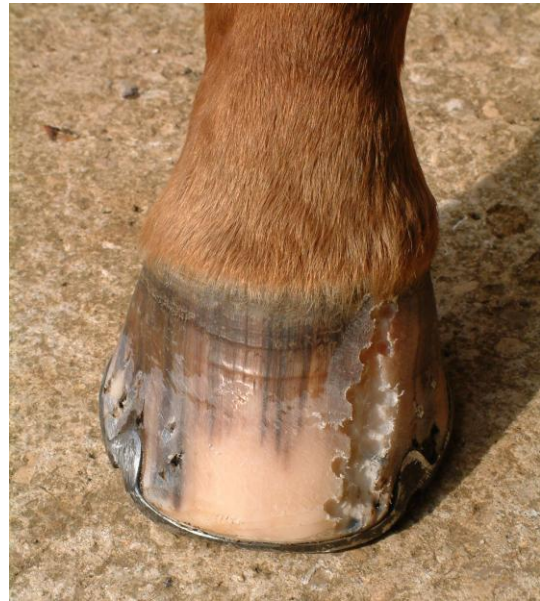


Photo a.



Photo b.

Ideally it is best to fill to the edge of the crack leaving it slightly proud but not overlapping the edge of the repair. Procedure complete. (Any excess can be rasped away when the thermoplastic Imprint Hoof Repair granules have cooled and the Imprint Structural Adhesive cured 5-10 minutes). Any voids at the top of the crack can be filled at a later date as it grows down to complete the repair. Running a film of Imprint Structural Adhesive over the finished repair ensures a good seal.