

# 5 Minute Fitting Guide

**IMPRINT®**  
FIRST

**IMPRINT®**  
PLUS

Approx  
time  
req'd

SHOE TEMPERATURE = MALLEABILITY



**A**

- Match shoe size to hoof.

**B**

- Place shoe in container on shoe support.
- Add Imprint Hoof Repair material if required.
- Add boiling water... 100°C to cover rim only.
- Heat until malleable – approx 2 minutes.

**C**

- Whilst shoe is heating, bevel edge of hoof wall.
- Create 6-8 crisp keying points around the lower edge of hoof wall.

**2 mins**

**D**

- Apply Imprint adhesive to hoof wall to height of shoe rim.

**E**

- Remove shoe from container wearing wet latex gloves.
- Shake off excess water.
- If required, add extra Imprint Hoof Repair to frog plate to ensure ample contact with frog.
- Run a wet finger around rim to open out a little.

**1 min**

**F**

- Position and mould shoe centrally on foot.
- Quickly blend rim to hoof wall.
- Maintain original rim height.
- Press plastic into indentations.
- Ensure good frog contact.
- Blend heels of shoe to hoof.

**G**

- Harden with Imprint Freezer.
- The shoe should be hard before weight-bearing.

**2 mins**

**H**

- Run a bead of adhesive around rim.
- Fitting is complete.
- Let horse stand until adhesive is hard.
- Minor finishing can be done with a rasp to smooth edges.
- Any area needing remodelling can be reheated using a small flame torch.
- Shoe Removal – rasp off rim and peel away from heels.

**See over for more details**

## EXAMPLES

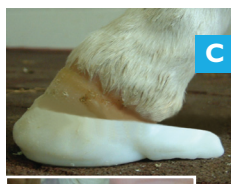


←  
Front View

MICRO-  
INDENTATIONS  
FOR FOAL  
SHOE



←  
Side View



←  
Side View



FITTED FOAL  
SHOE WITH  
PREFABRICATED  
CAUDAL  
EXTENSION

←  
Solar View



FOAL SHOE  
WITH  
MEDIAL  
EXTENSION  
ADDED.



LARGE IMPRINT  
LATERAL  
EXTENSION.

# Foot Preparation For Foals

**IMPRINT®**  
+  
FOAL

## Foot preparation:

*It is important to appreciate the immature nature of the foal's foot.*

- Trim hoof as normal; remove waxy periople from around heels.
- Use a 2mm (1/8") burr; cut 'micro-indentations' (see A and B), half depth of hoof wall, 4mm (3/16") diameter, every 12mm (1/2") around lower hoof wall, then follow the standard Imprint fitting instructions.

## Fitting Imprint shoe extensions

- Make more micro-indentations in area where an extension is to be added to either side or toe of the hoof.
- Follow instructions as above, but when heating the shoe, add sufficient Imprint Hoof Repair plastic to the container to make extension.
- When plastic becomes translucent it can be welded to the shoe.
- Immediately fit shoe to foot and finish modelling extension *in situ*.
- It is helpful to press plastic into micro-indentations with tip of mixing nozzle.
- Ensure there is always adhesive between the plastic and the horn.
- Blend extension up hoof wall for strength and to prevent loss, particularly on inside medial extensions.
- A straight edge knife is useful when shaping extension.
- When complete, shoe and extension is hardened using Imprint Shoe Freezer; concentrate on base of extension where most cooling is needed.
- When cool and completely hard, allow to bear weight.
- Check for any movement or gaps between shoe and hoof.
- Keep patient standing for ten minutes or until adhesive has cured.

## Further extension or graduation after fitting:

- Using a small gas torch, apply localised heat to soften shoe surface then weld preheated Imprint Hoof Repair plastic and mould to shape then cool.
- **Prefabricated extensions:** When large extensions are required such as a caudal extension (see C), this can be prefabricated on the Imprint shoe prior to fitting, and then completely cooled before fitting as above.

**IMPRINT®**  
+  
**EQUINE FOOT CARE**

IMPRINT is a  
Registered TradeMark  
of Poynton Ltd

Imprint Equine Foot Care, Town Forge, High Street, Malmesbury, Wiltshire SN16 9AT  
Tel & Fax: 01666 822953 Email: [info@imprintshoes.co.uk](mailto:info@imprintshoes.co.uk) [www.imprintshoes.co.uk](http://www.imprintshoes.co.uk)



Find us on  
**Facebook**

[www.facebook.com/ImprintEquineFootCare](https://www.facebook.com/ImprintEquineFootCare)